



Universidad  
del País Vasco

Euskal Herriko  
Unibertsitatea



ASOCIACIÓN DE EMPRESAS  
**ARANZADI**  
ZIENTZITZAILEAK



# Lurrazpiko Ondare arkeo-paleontologikoa: erronkak eta babesak

**Alvaro Arrizabalaga**  
**Gasteiz, 2018-XI-17**



**Balio handiko inguruneak**





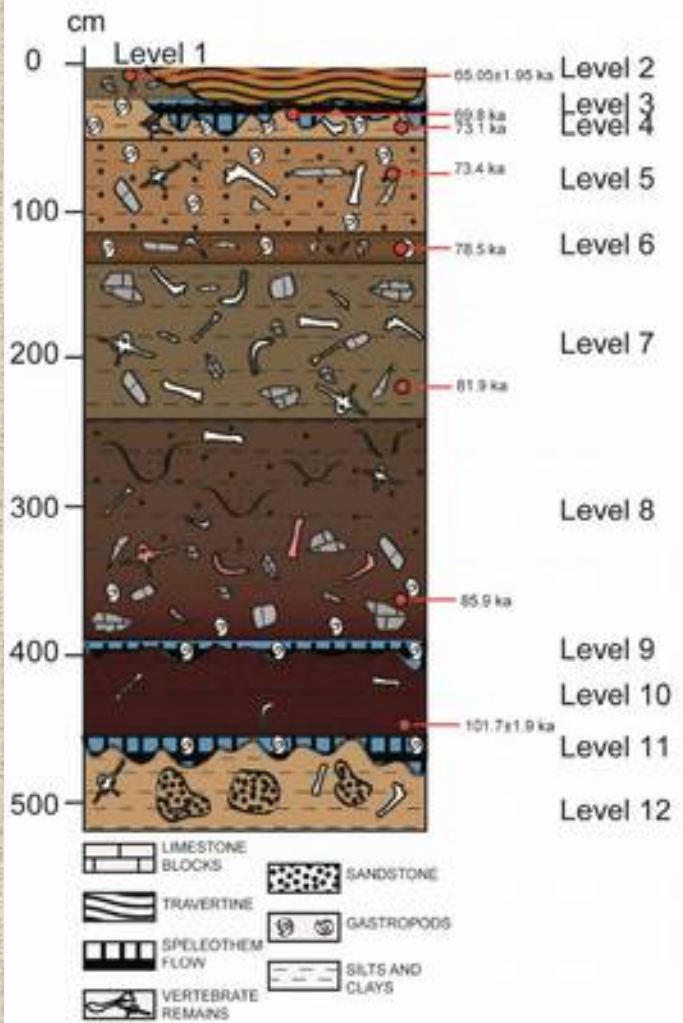




## Aitzgaizto II

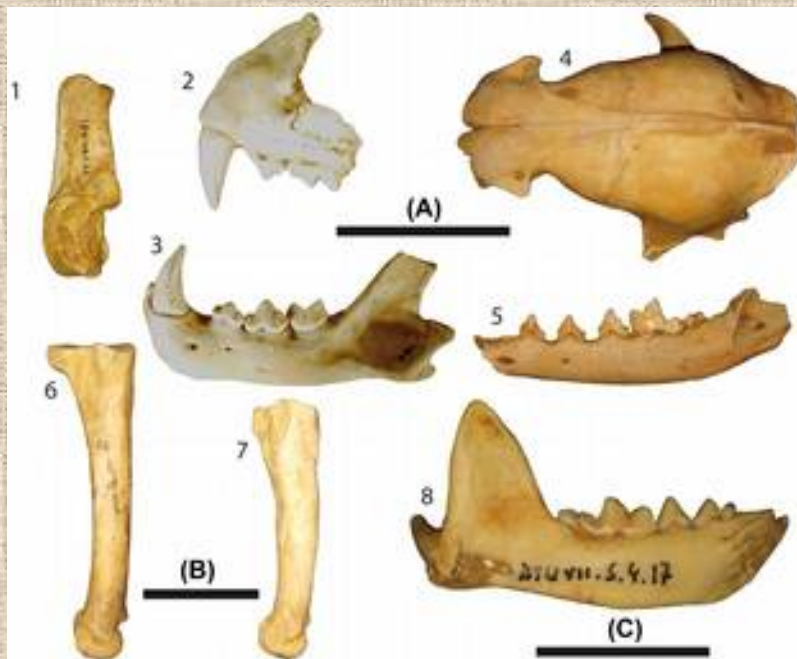


# Artazu VIII

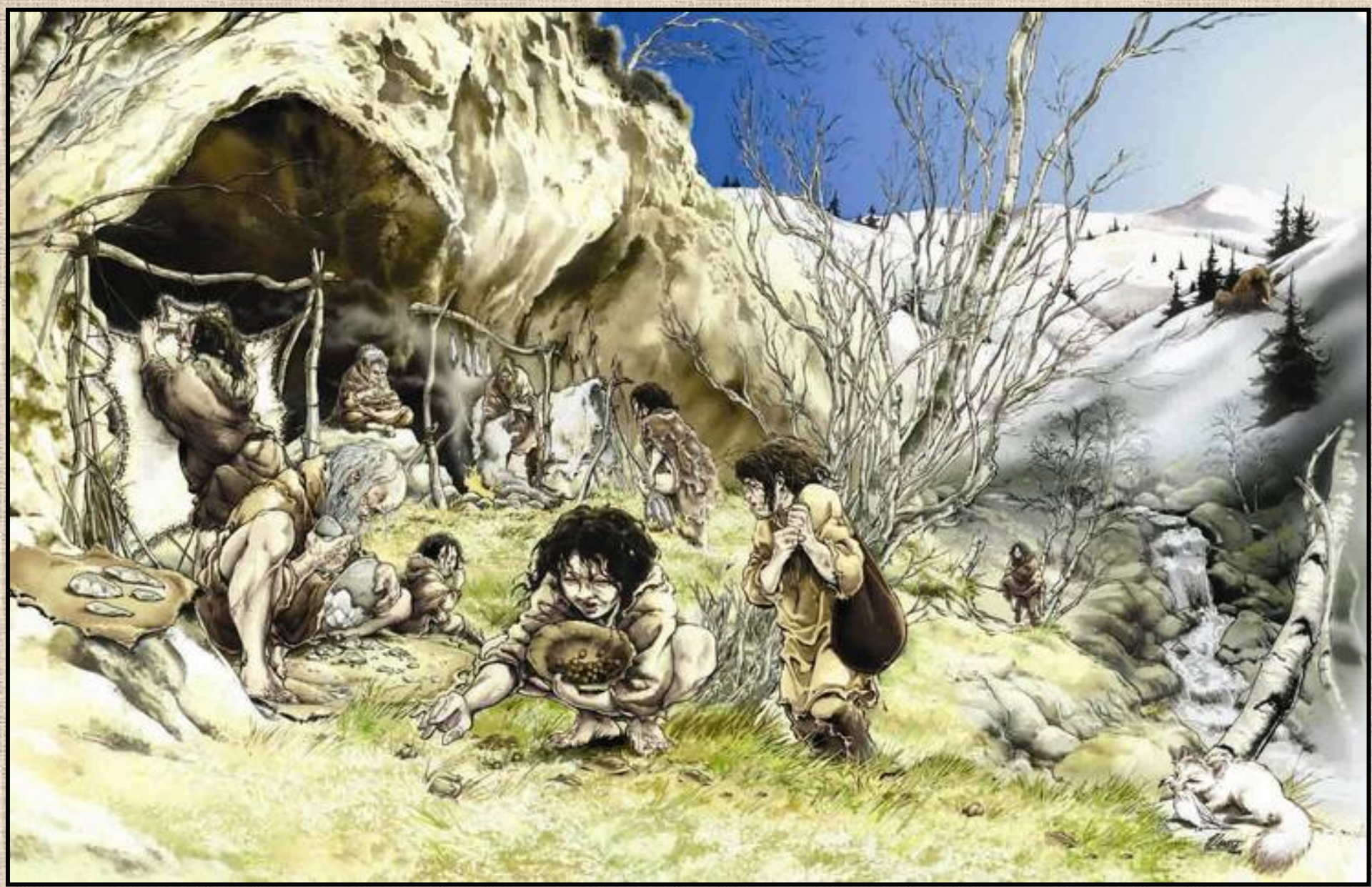




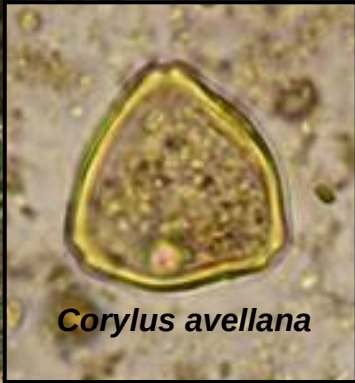
# Artazu VII



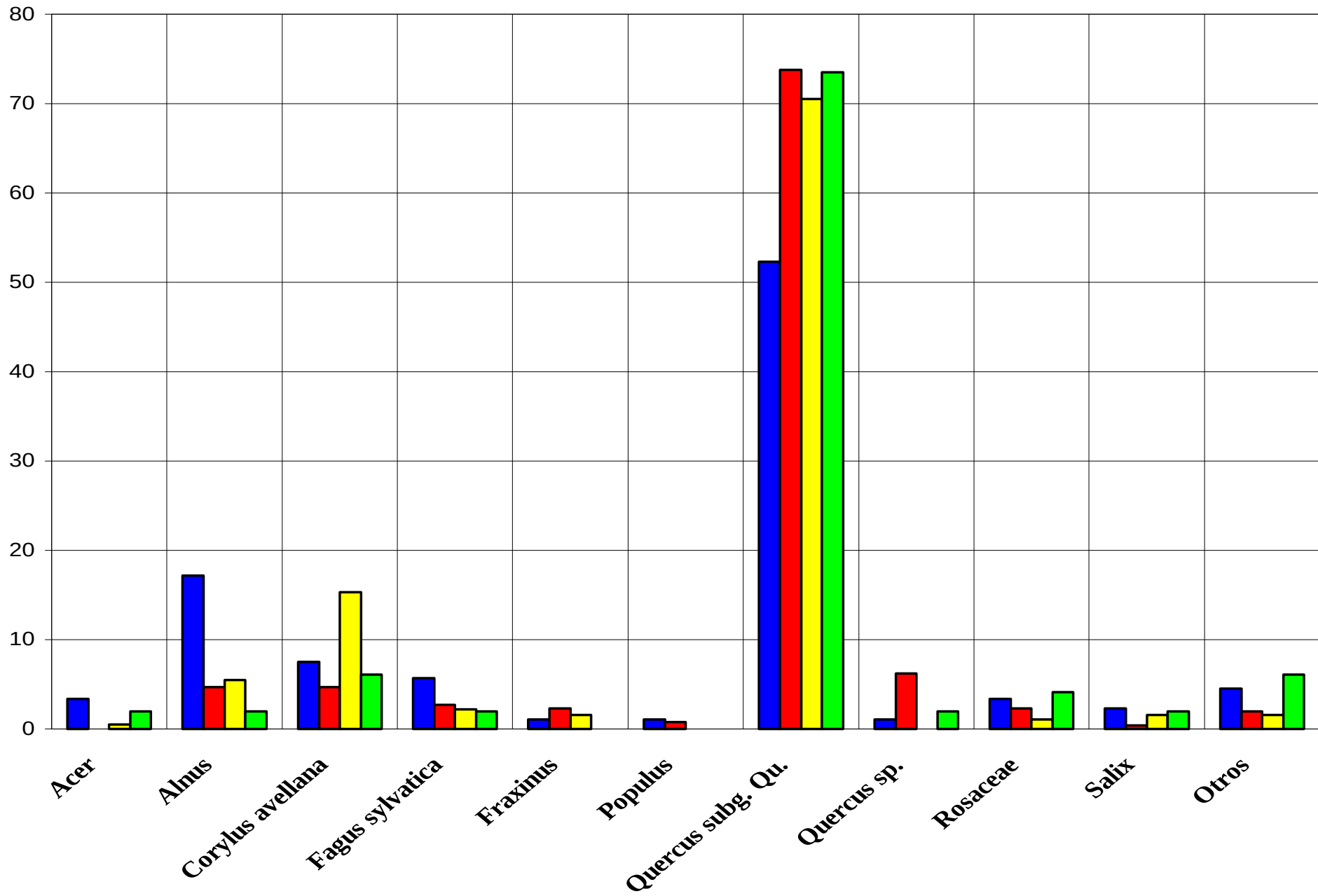
	NIS P	MNI	NISP	MNI	NISP	M NI	NISP	MN I	NIS P	MNI
<i>Buteo lagopus</i>	1	1	1	1					2	2
<i>Aquila</i> sp./ <i>Haliaeetus</i> sp.							6		6	
<i>Perdix perdix</i>			12	2			2	1	14	3
<i>Coturnix coturnix</i>	35	5					2	1	37	6
<i>Lyrurus tetrix</i>	3	1	51	4			27	4	81	9
<i>Alectoris</i> sp.			1	1					1	1
<i>Alectoris</i> sp./ <i>Perdix perdix</i>			2						2	
Galliforme indet.	2		11				4		17	
<i>Crex crex</i>	1	1	5	2					6	3
<i>Crex crex/Rallus aquaticus</i>			9						9	
Rallidae indet.			2						2	
<i>Bubo</i> cf. <i>bubo</i>	1	1					2	1	3	2
Strigiforme indet.	1								1	
<i>Corvus monedula</i>			3	3					3	3
<i>Pica pica</i>							6	1	6	1
<i>Pyrrhocorax graculus</i>	6	2	92	15			52	10	150	27
<i>Pyrrhocorax pyrrhocorax</i>	1	1	30	8			19	5	50	14
<i>Pyrrhocorax</i> sp.	23		107				16		146	
<i>Pyrrhocorax pyrrhocorax/Pica pica</i>			3						3	
Corvidae indet.	19		150		1		29		199	
Passeriforme indet.			17				3		20	
Indet.	149		863		6		10		1028	
TOTAL	242	12	1359	36	7		178	23	1786	71







*Corylus avellana*



**Nivel II**

**Nivel III**

**Nivel IV**

**Nivel V**





Ekain





# Ekain



# Hirigintza



# Harrobiak



# Praileaitz I



**Cueva de Praile Haitz**



*Terrae Antiquae*



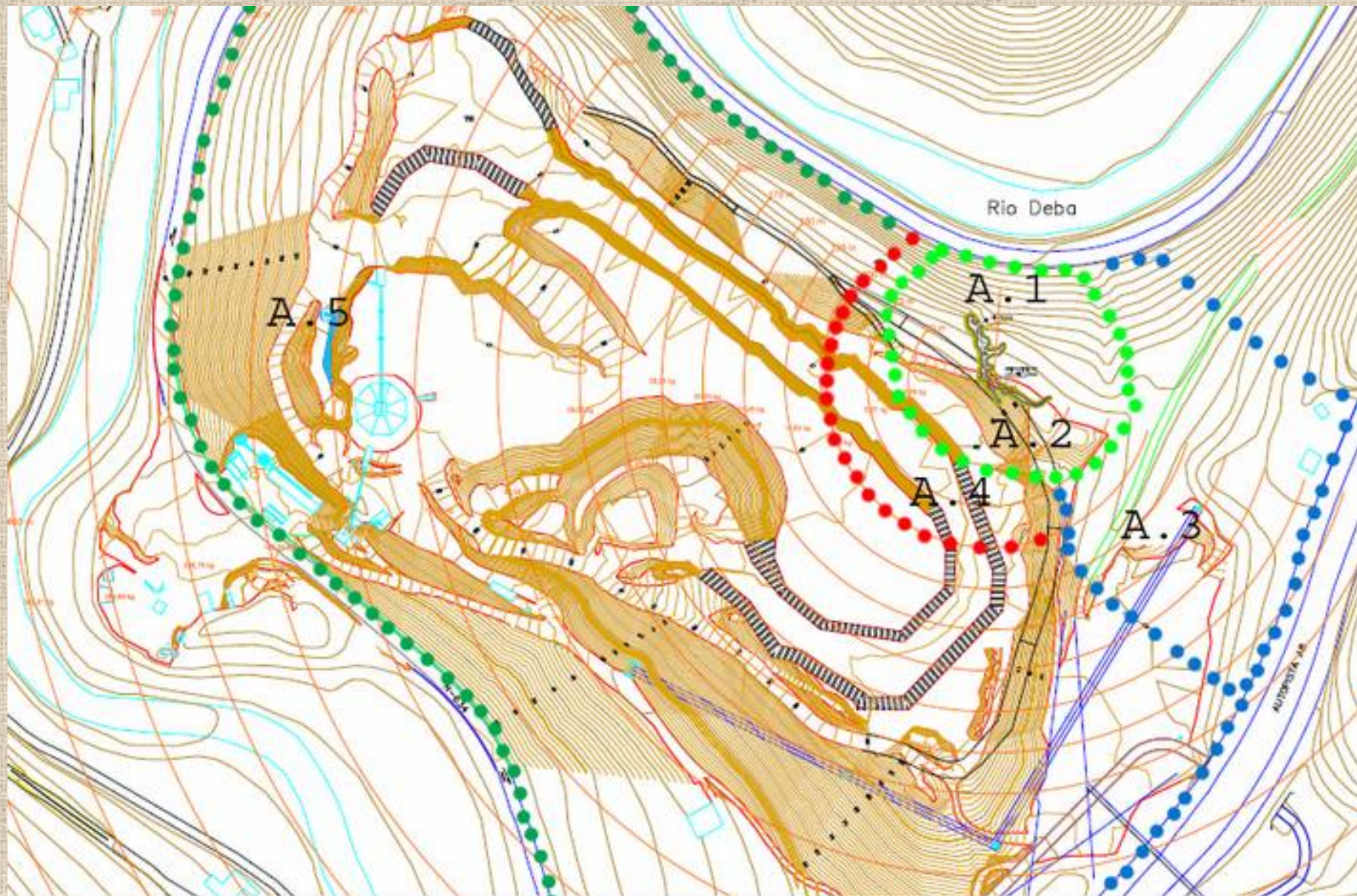
# Praileaitz I



*Praileaitz-1*



# Proposatutako babes esparruak



# Linatzeta





# Adibide eredugarria: Kobate



## Artazu II





## Ikuluteko Gaina (Erlo)



# Tximistorratza





## Abaroa (Oltza)



# Ikeitz (Zestoa)



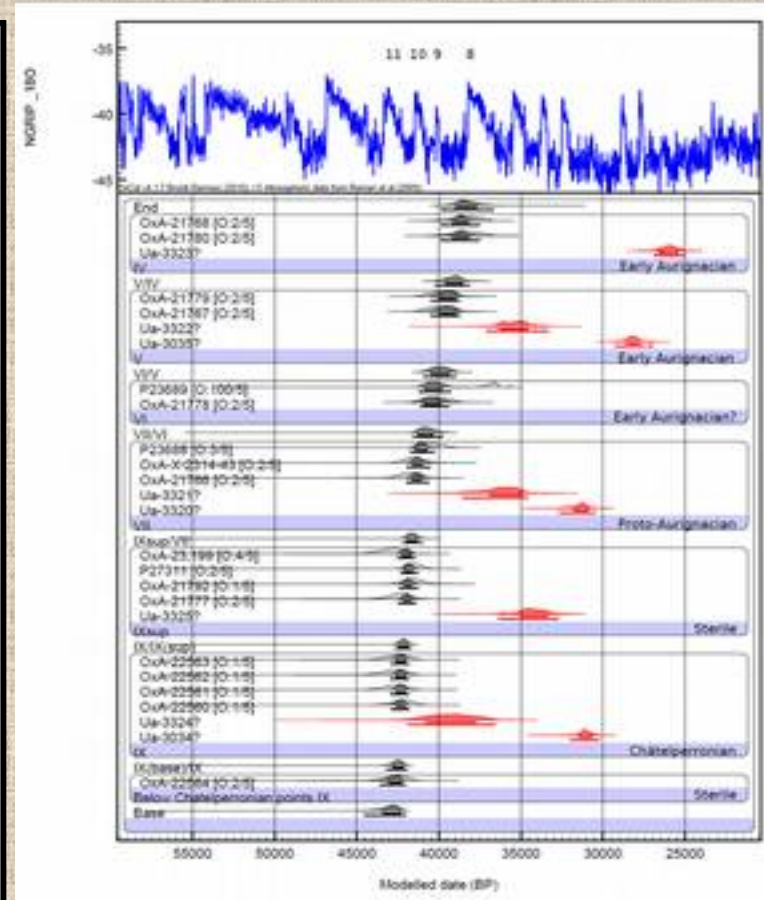
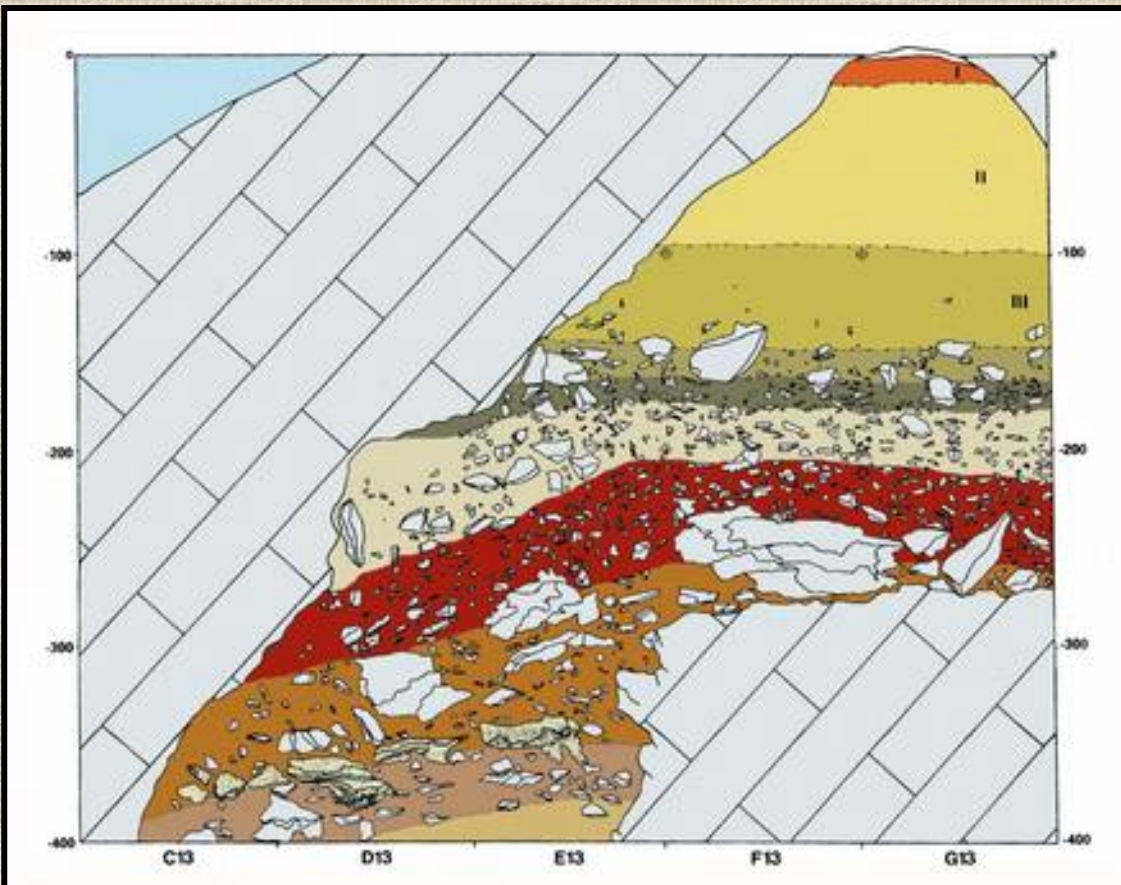




## Labeko Koba (Arrasate)



# Labeko Koba

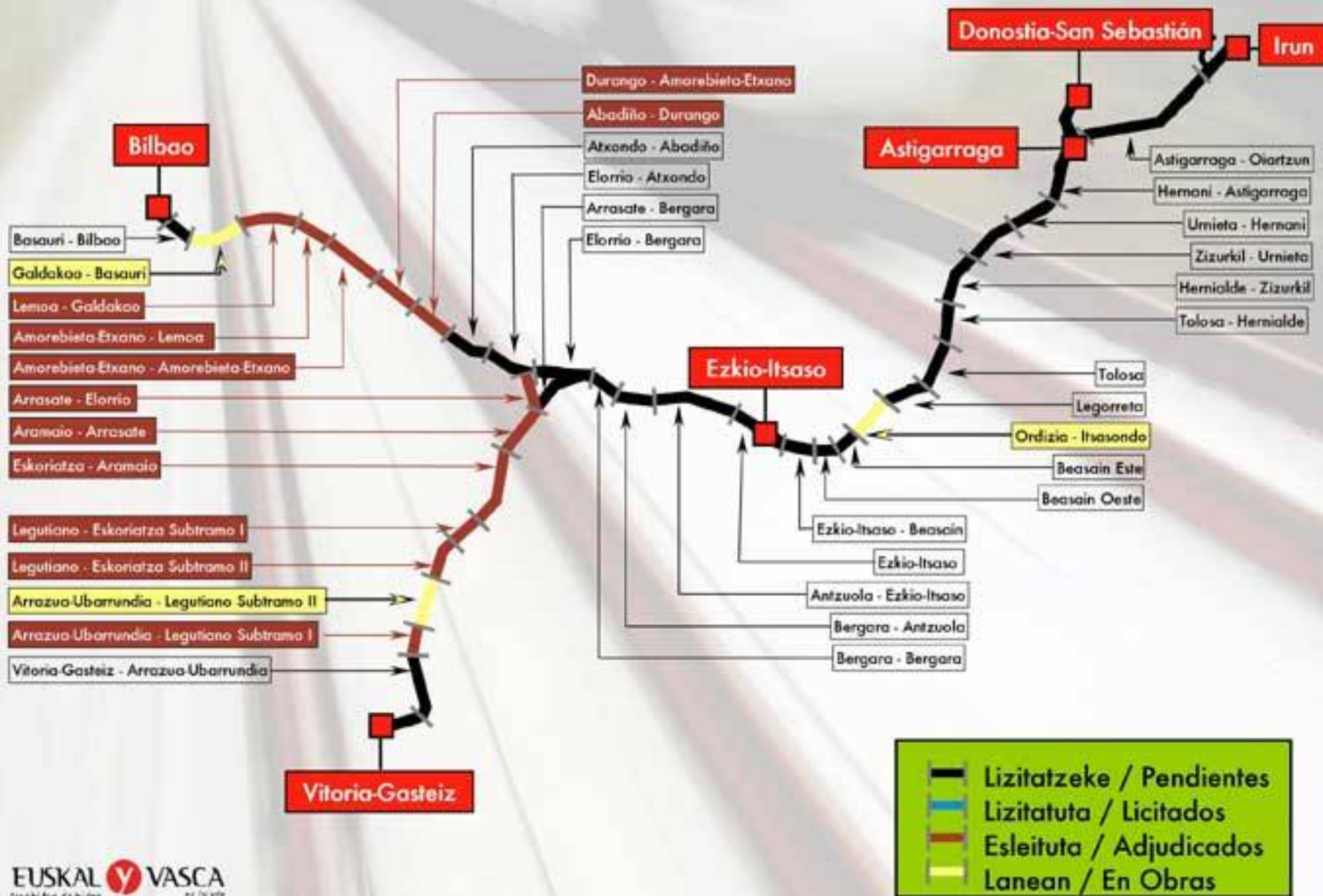


# Labeko Koba





# Tarteen egoera / Situación de los tramos





208 m

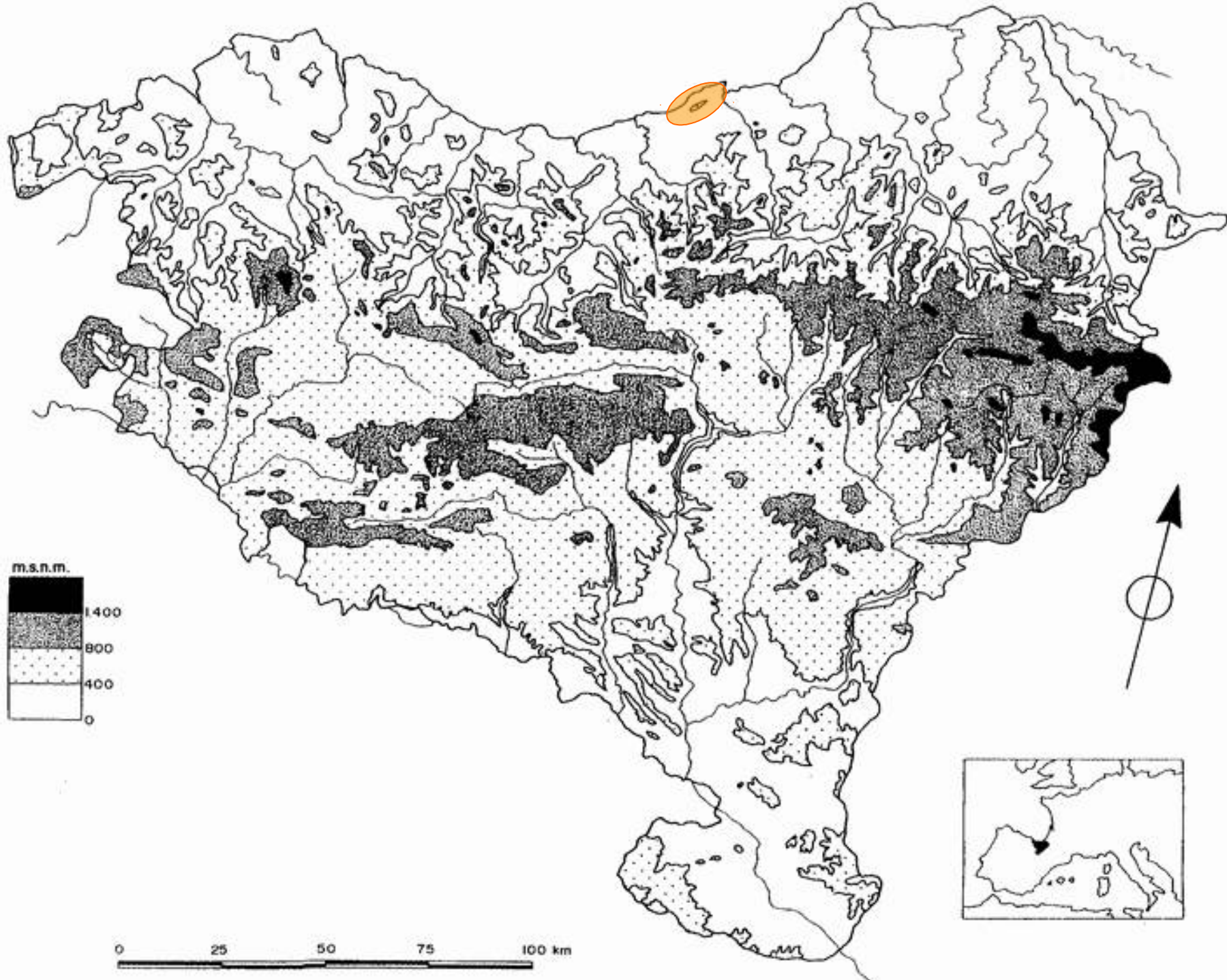
165 m

Garagartza

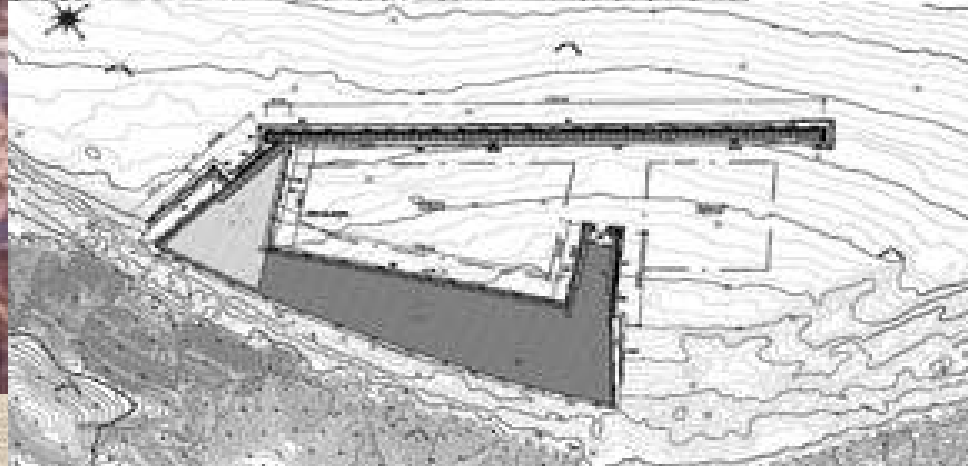
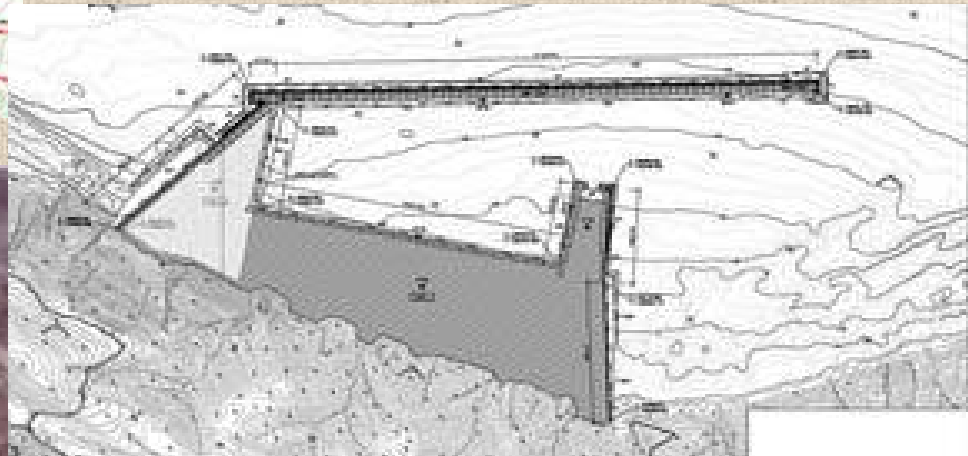
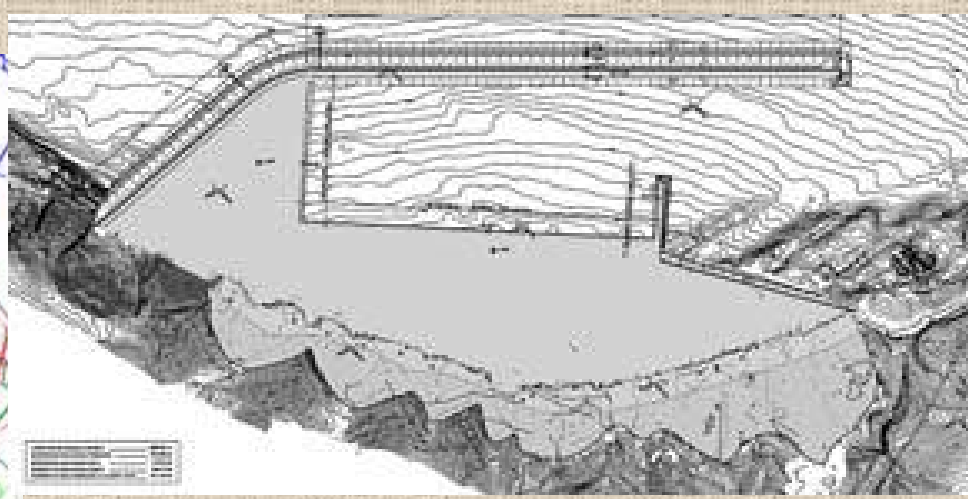

















**J3**





**$8190 \pm 100$  BP (ikatz)**

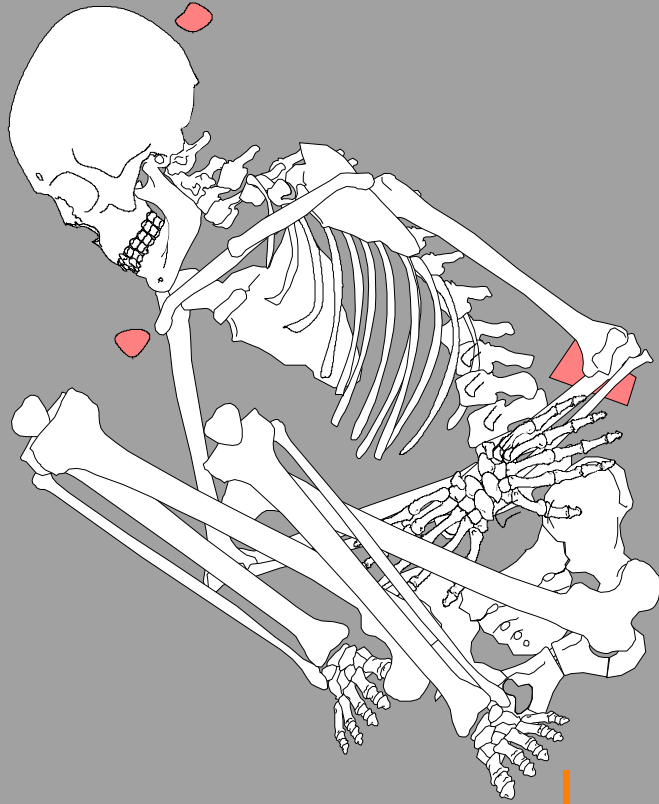
**$7780 \pm 130$  BP (maskorra)**



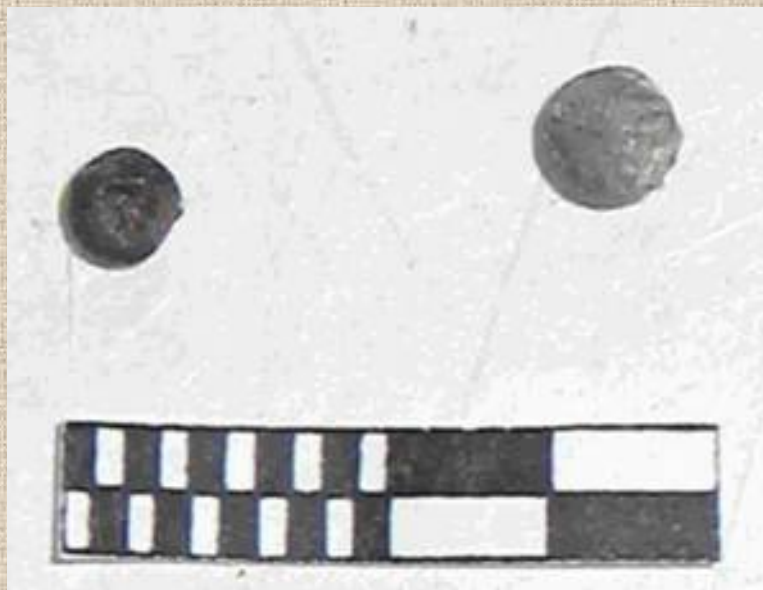


K 12

K 10





























## Urkiolako Parkean



# Bolinkoba



# Askondo

3M7

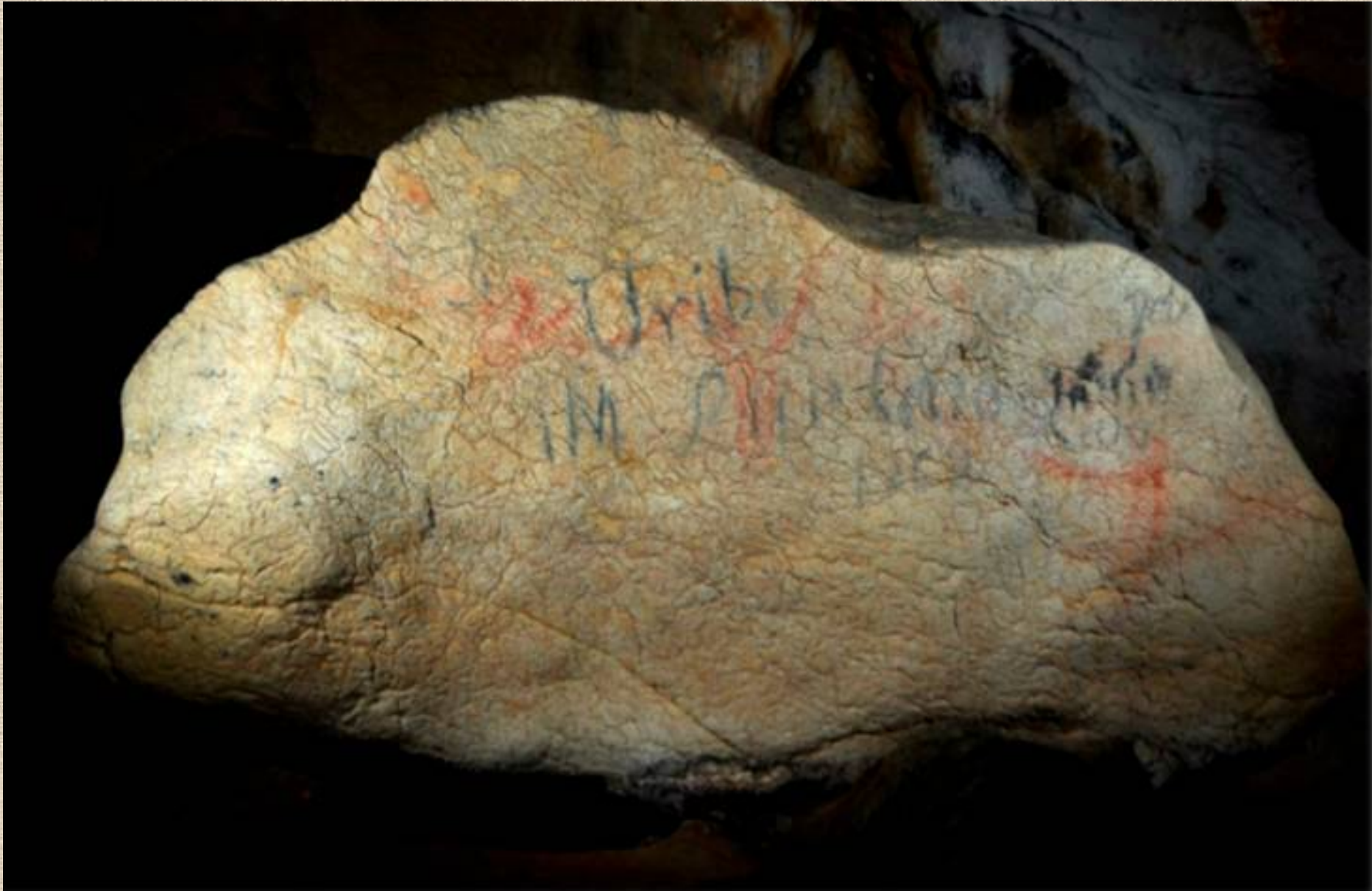
A photograph of a rock face, likely a cave wall or a natural rock formation. The rock is light-colored, possibly grey or off-white, and shows significant weathering and staining. There are several dark, irregular patches of what appears to be mineral deposits or organic growth. The number '3M7' is painted in red on the rock surface, centered in the right half of the image. The overall appearance is that of an old, weathered rock face.

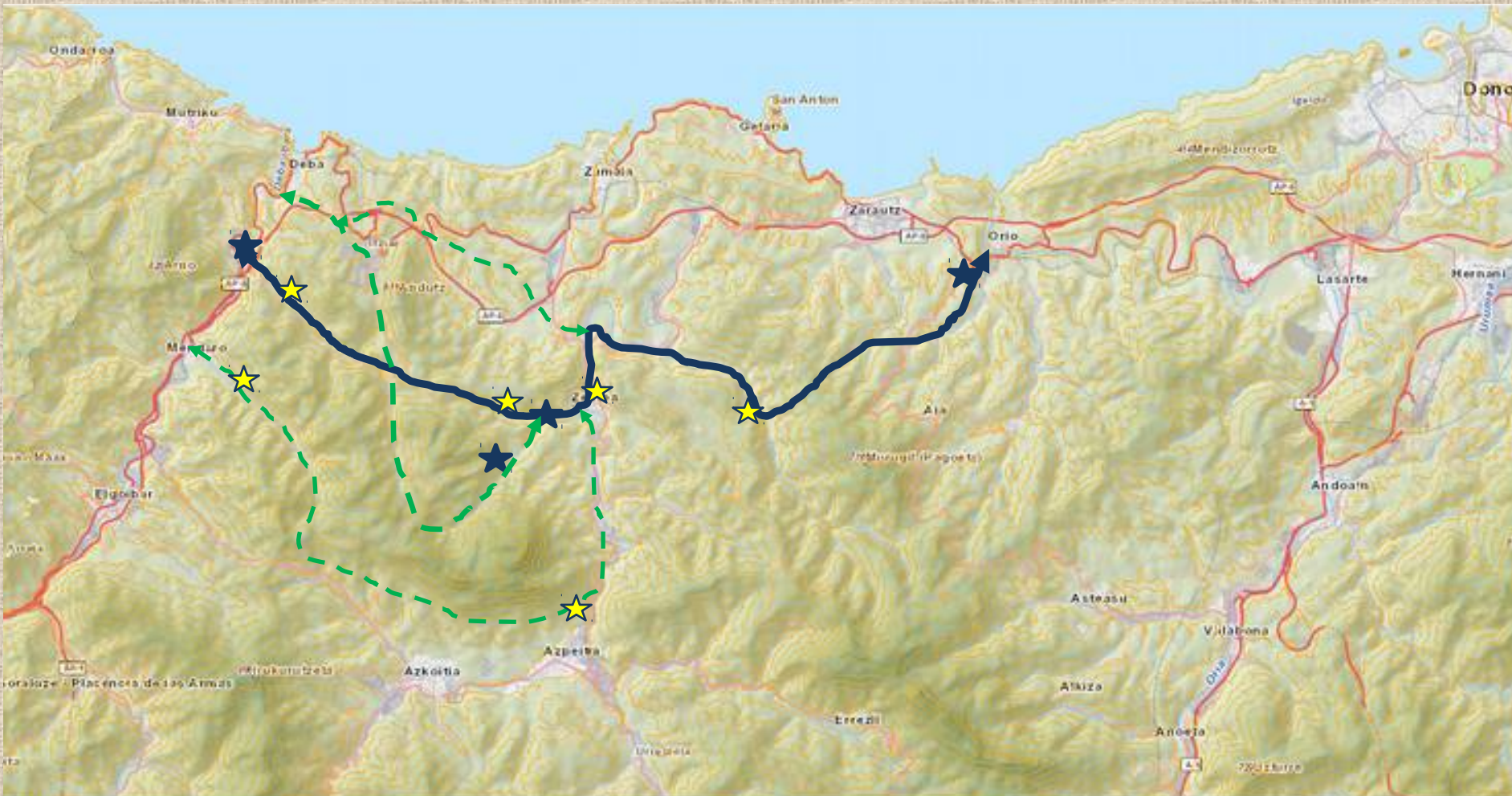


# Atxurra

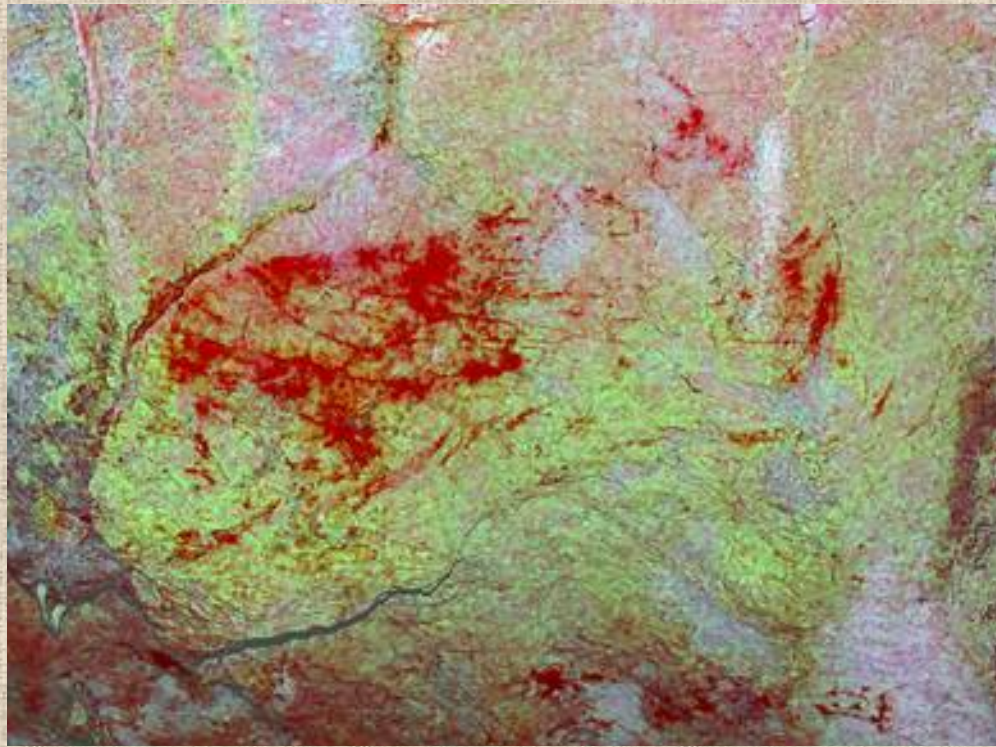


# Lumentxa





# Danbolinzulo (2014)



# Erlaitz (2015)



# Astui-gaina (2016)



# Sustraixako kobie/ Arbil V (2017)



# Agarre (2018)





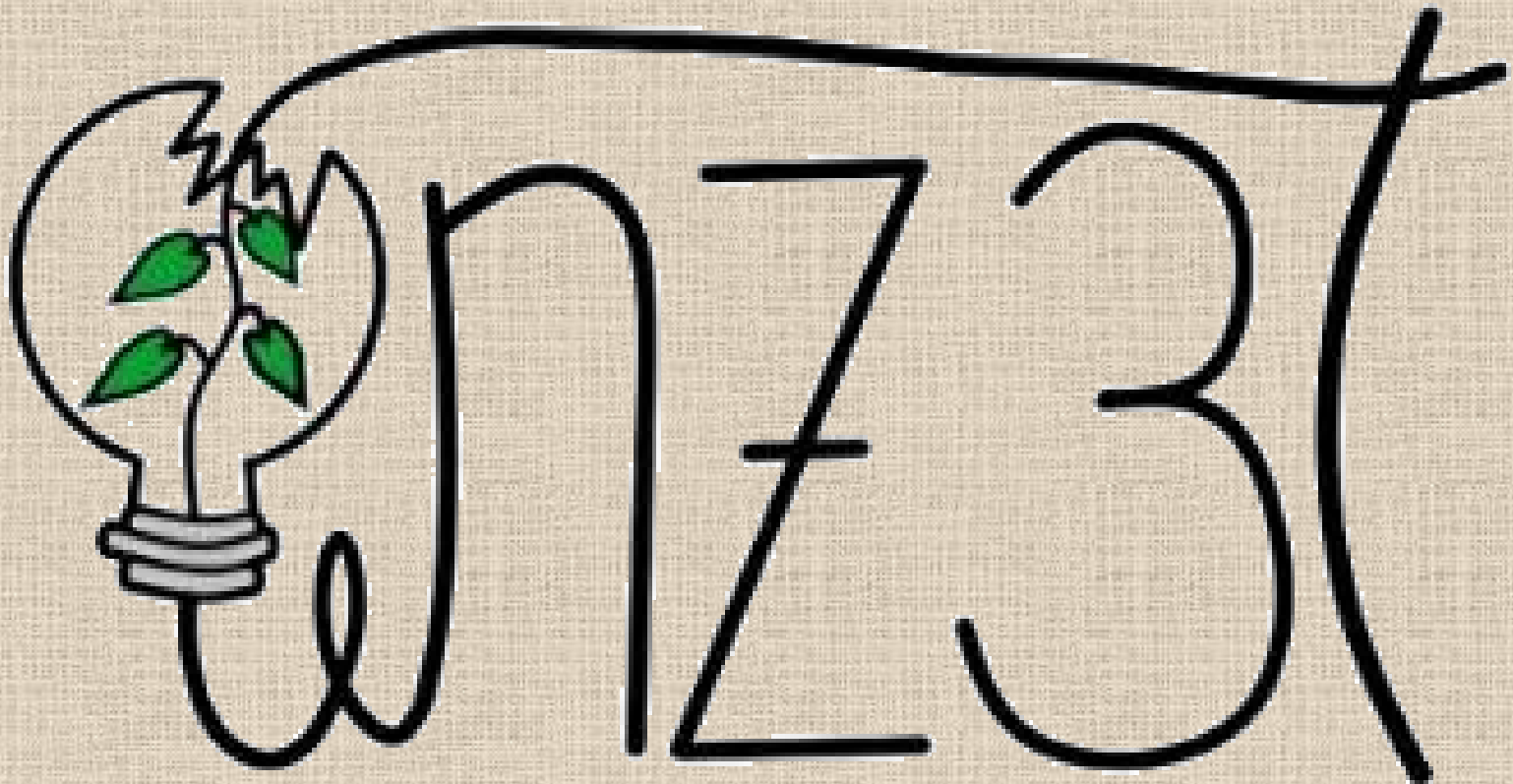
## HAUSNARKETA TXIKI BAT

- 1969tik hona jarraitutako eredu ekonomikoa “*desarrollismo*” hutsekoa da: birgaitze eta kontserbazioan baino, gehiago oinarritu da eraikuntzan. Honen eragin arkeologikoa bikoitza da: errejistroaren txikizioa eta hartxintzarren (eta karea, eta porlana,...) beharra, lehen gai bezala.
- 1950 arte, eskuzko bitarte teknikoekin egiten zena, mekanizatu egin da, arazoaren dimentsioak handituz.
- Baita gu ere, gizarte honen kideak gara, eta neurri batetan, ba dugu erantzukizuna. Gure egunera arte iritsi den Ondare kulturalaren kontserbazioa bermatzeko, lagundu behar dugu.

## HAUSNARKETA TXIKI BAT II

- Lurrazpiko Ondare arkeo-paleontologikoaren txikizioan, kalte handienak dira azpiegiturak ekartzen dituztenak.
- Ongi informatuta egon behar gara, erabaki zuzenak hartu ahal izateko. Behin onartu dugula azpiegiturak eta lehen gai asko behar dugula, jokabide sustenigarria bilatu beharko dugu, ahal den neurrian, Ondarea babestuz. Ondasunak higikorrak direnean soilik, zenbait kasutan, salbamenduzko indusketak garatu daitezke.
- Haitzuloei dagokienez, labar artea bertan dagoenean, itxiturak ezinbestekoak dira.

# Mila esker zuen arretagatik!



NATUR ZIENTZIAN III. TOPAKETA  
sinbiosian